



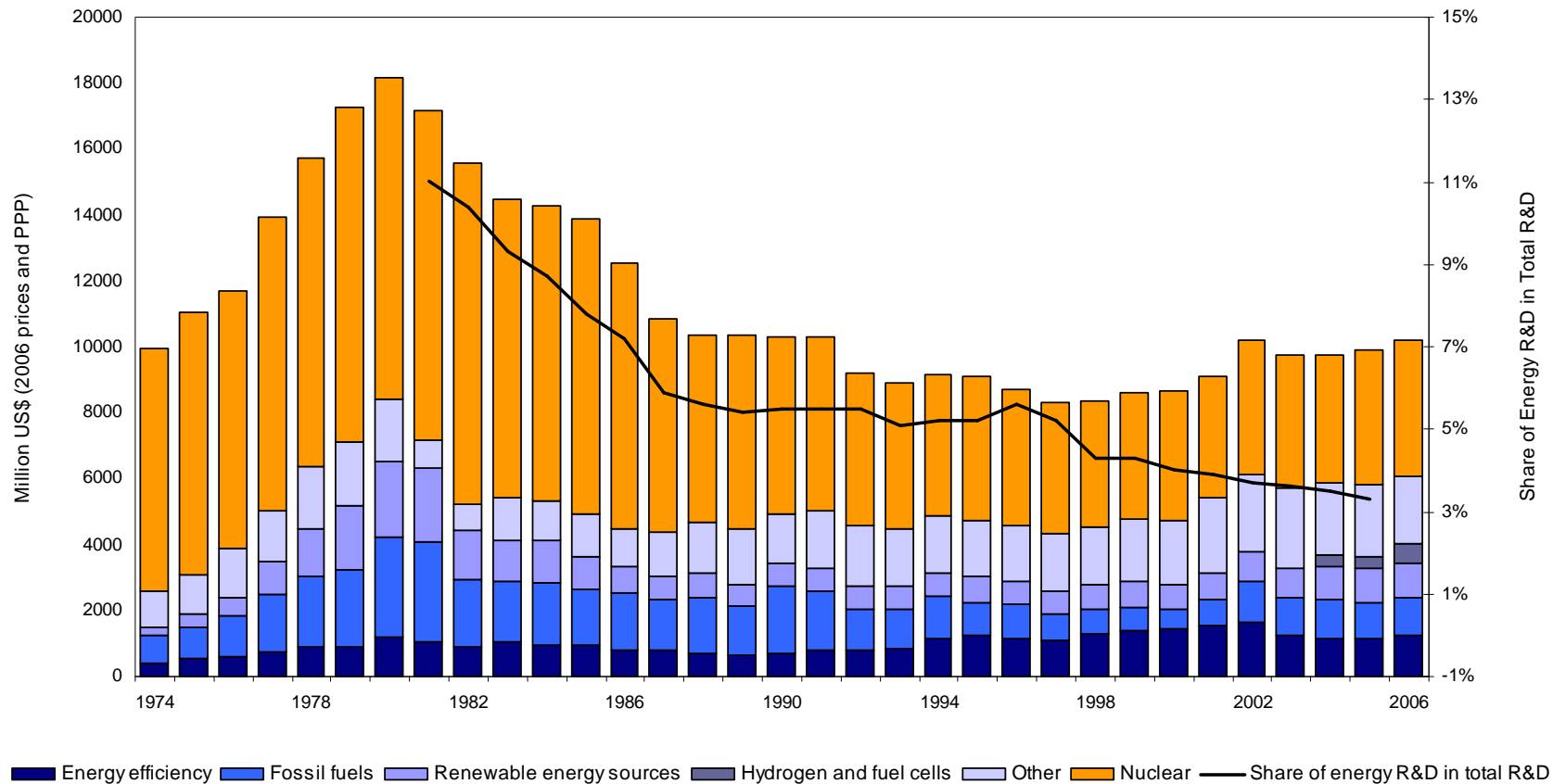
European Strategic Energy Technology Plan (SET-Plan)

STIMULATING INVESTMENT



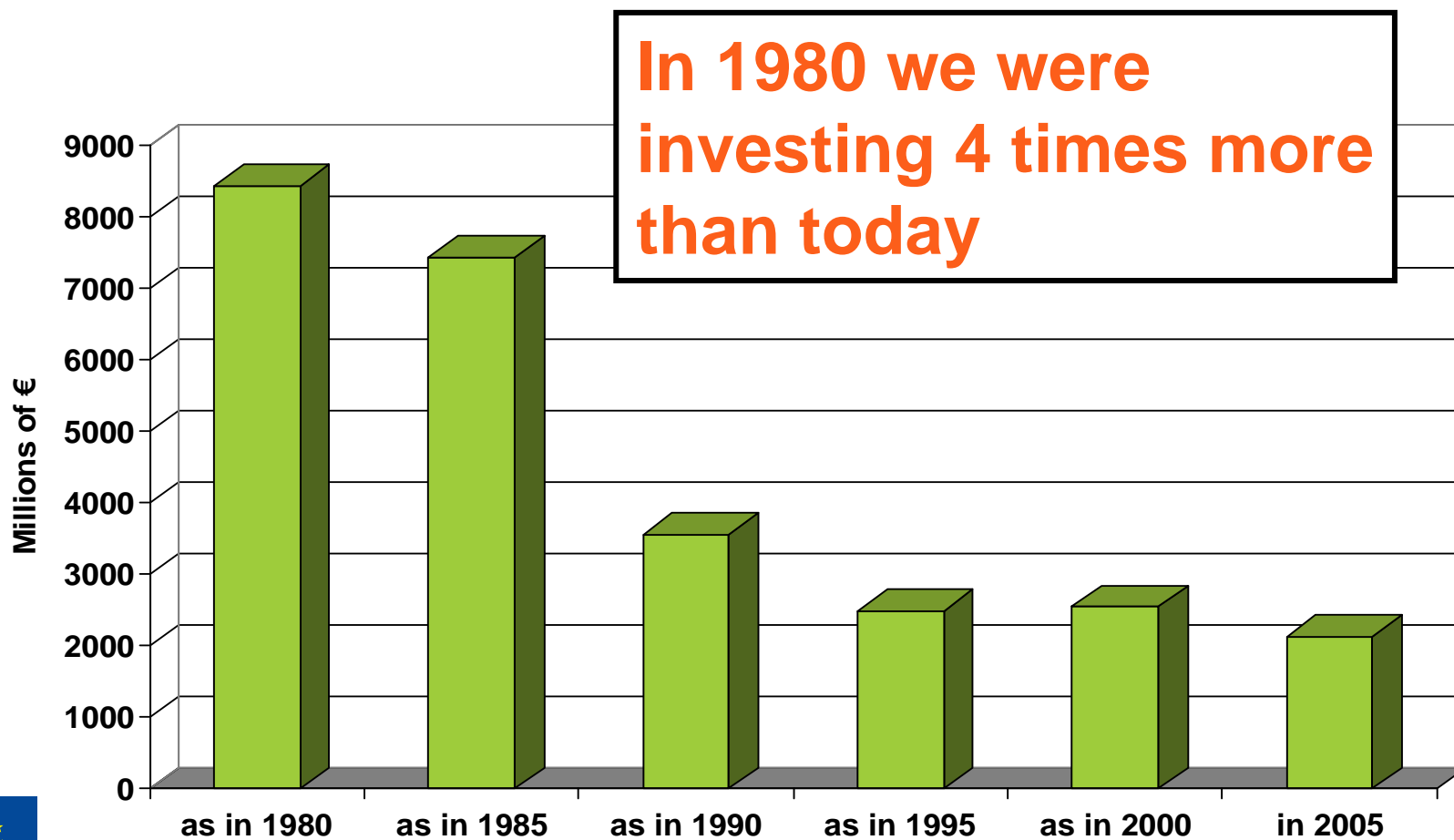
EUROPEAN
COMMISSION

● Easy oil tempered investment in RTD



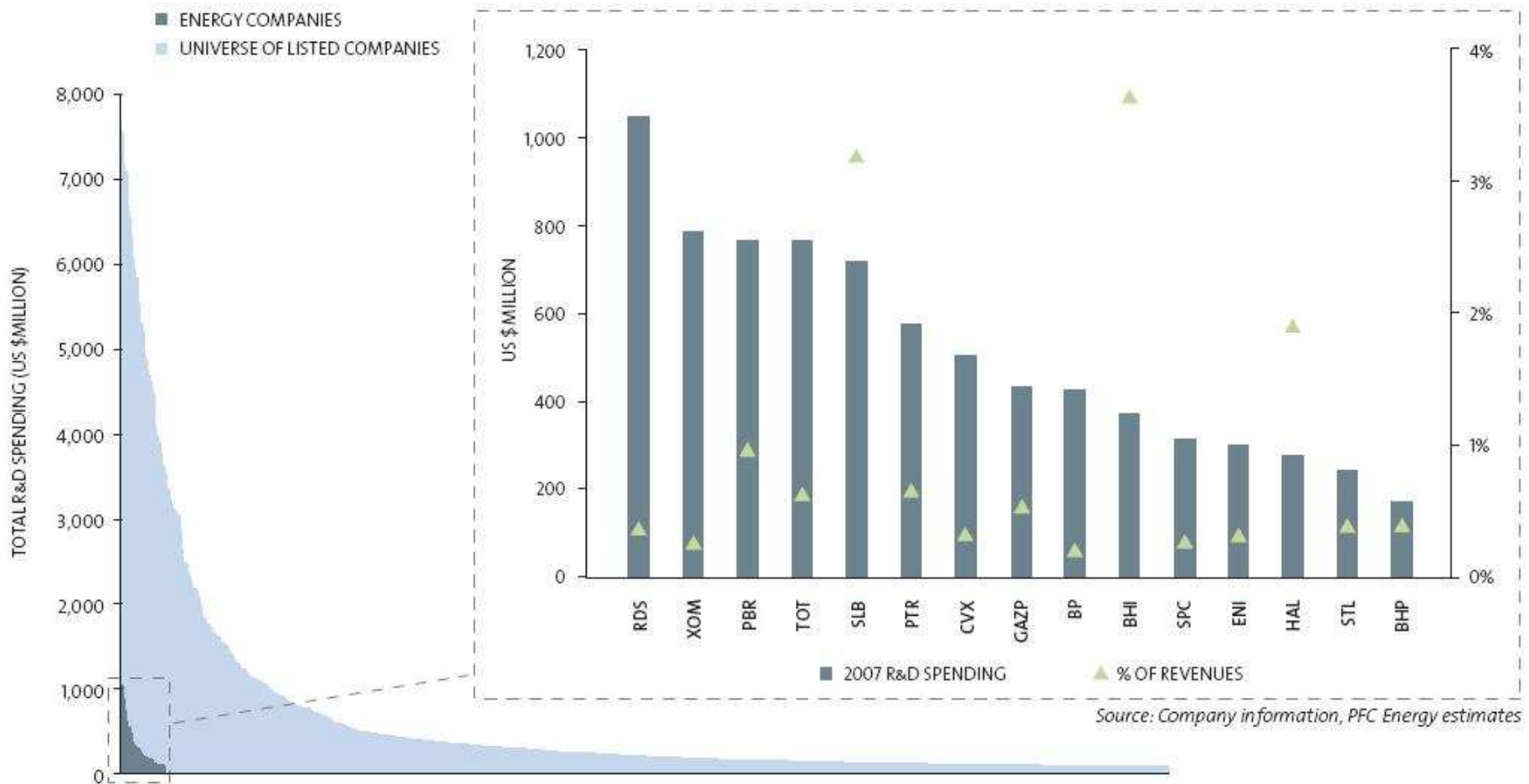
Source: OECD/ IEA, 2008

● **If we were investing at the same rate as in ..**
(Energy RTD investment in the EU)



Oil and gas industry investment in R&D

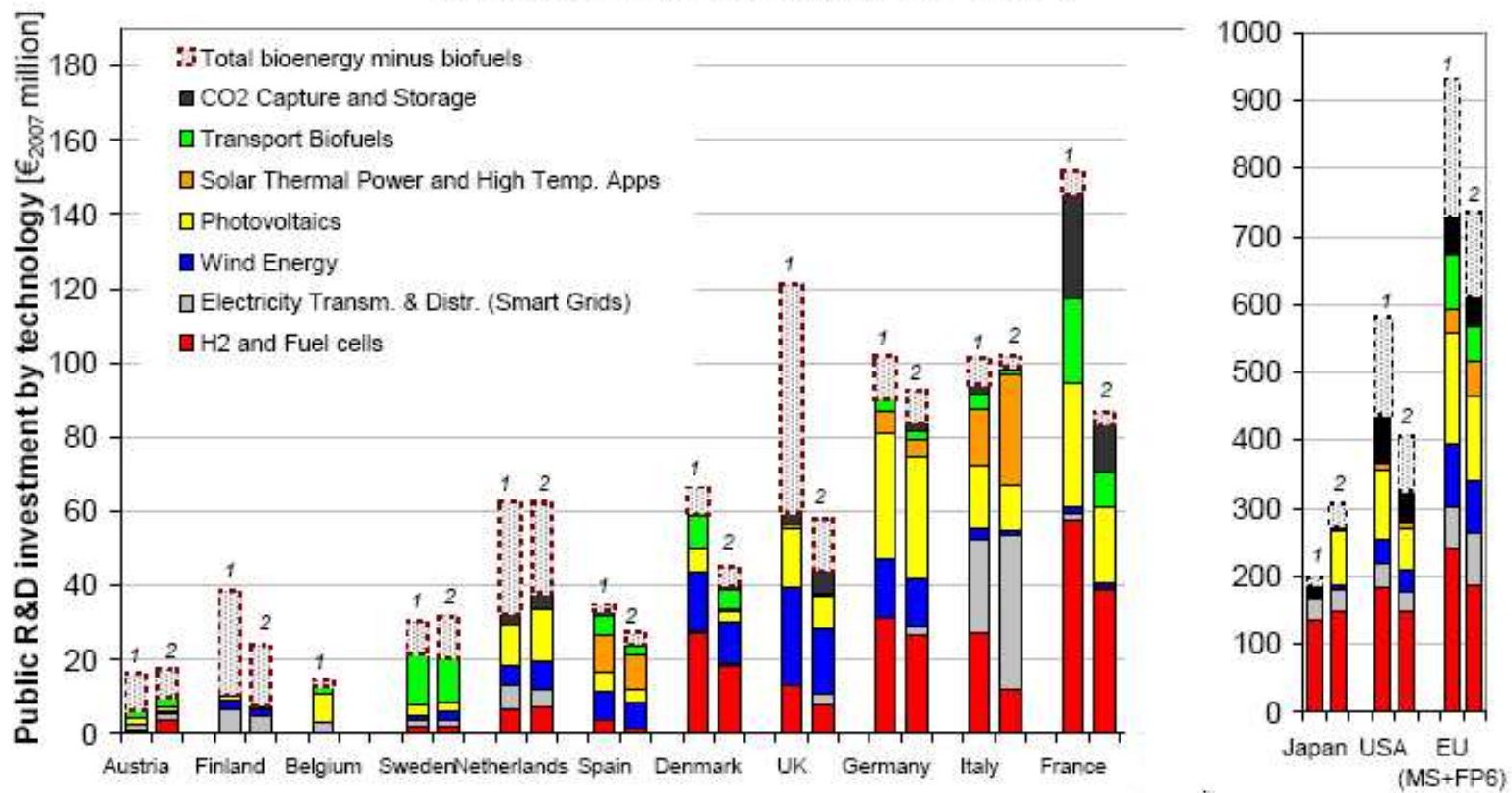
WHICH PFC ENERGY 50 COMPANIES SPEND MOST ON R&D?



Source: Company information, PFC Energy estimates

● RTD investment in LCT - EU (2007)

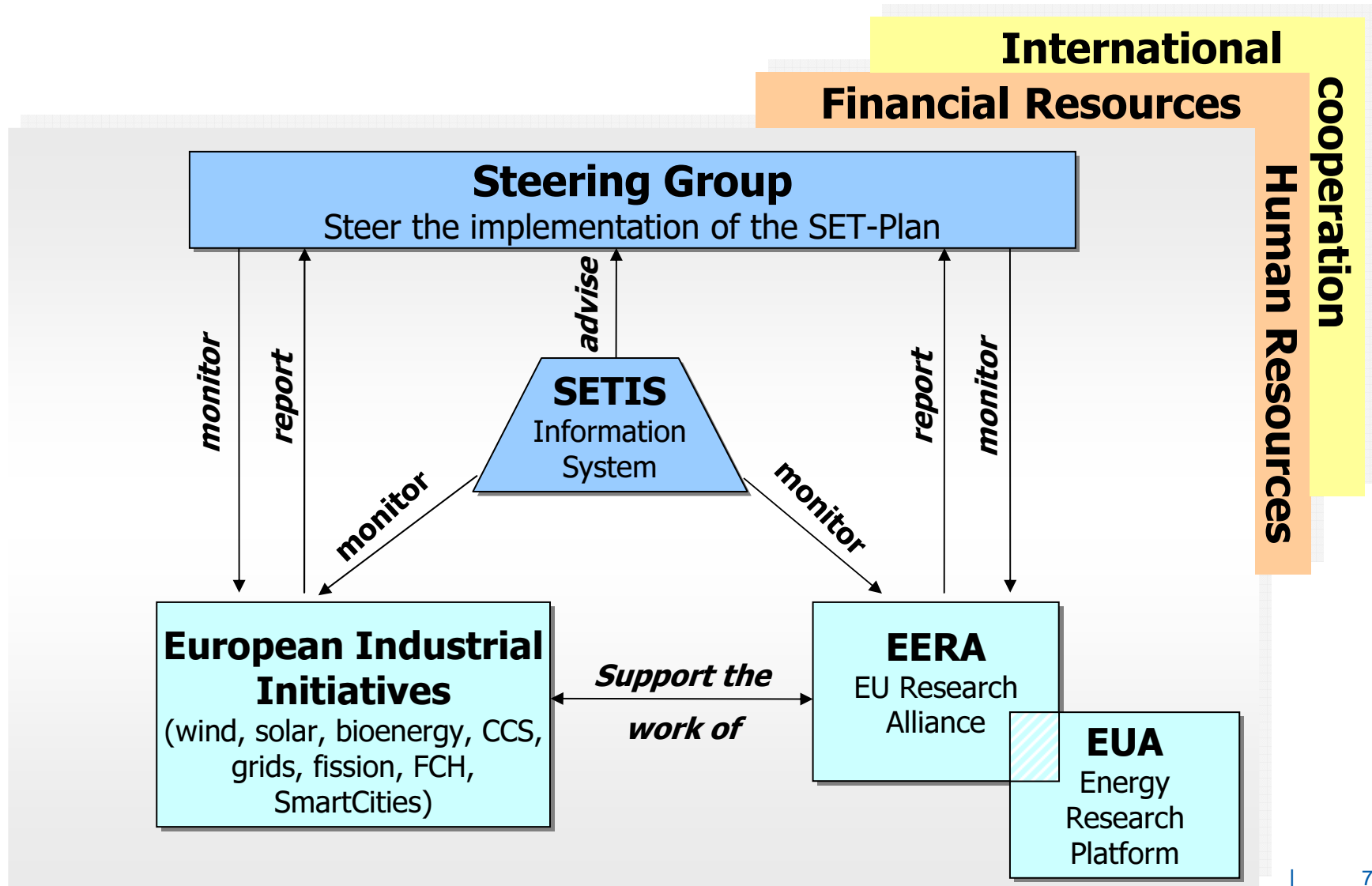
Public R&D spending in non-nuclear SET-P priority technologies
 1- 2007 data (gap filled)
 2- Annual average over the period 2002-2007



● Energy innovation – an up-hill struggle

- Long lead times to market + huge investments
- ‘Locked in’ carbon infrastructure + network connection challenges
- Few dominant actors + regulated market + imposed price caps
- Product un-differentiation + benefit to society (not to buyers) + social acceptance issues + legal and administrative barriers
- SUMMARY: no market appetite + no short-term benefits

● SET-Plan method



● Investment has to increase (1)

Need for a step change in investment

From 3b€ to 8b€ per year (public and private)

Additional investment: **50b€** over the next 10 years



● Investment has to increase (2)

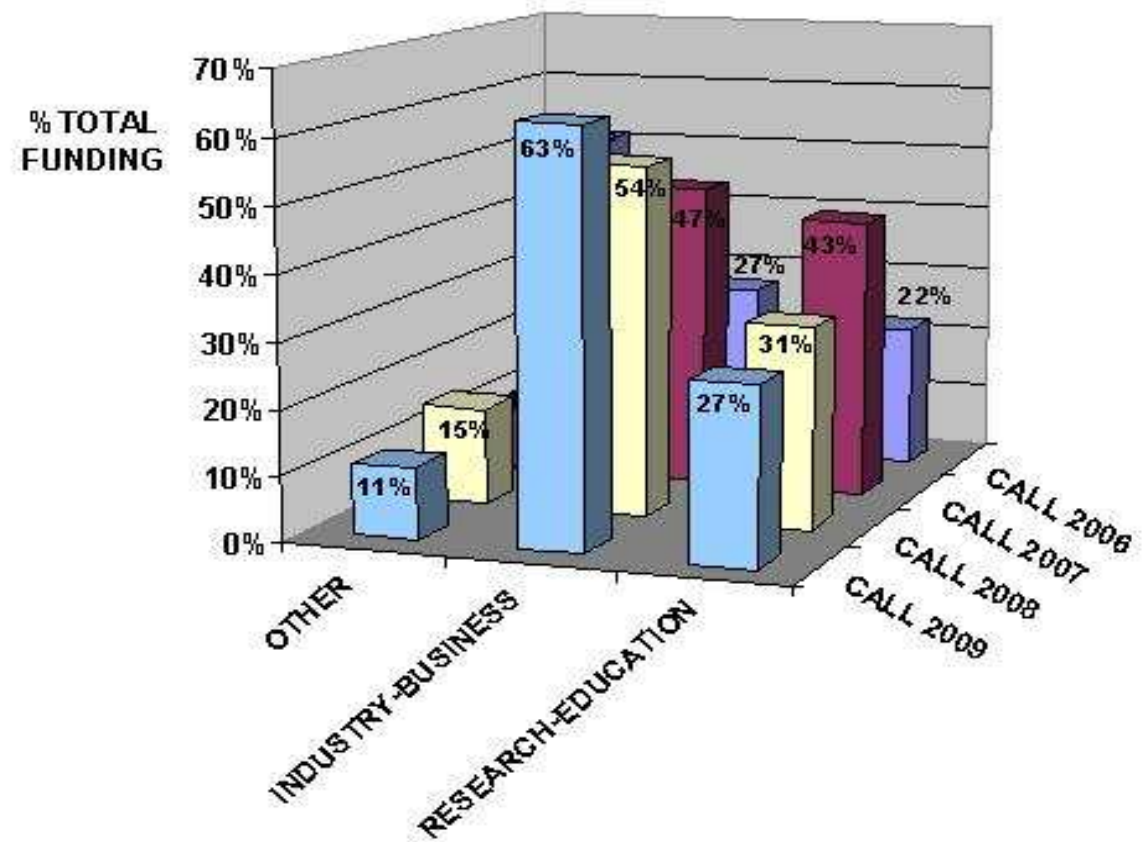
The greatest effort: INDUSTRY and MEMBER STATES

EU technology programmes and initiatives:

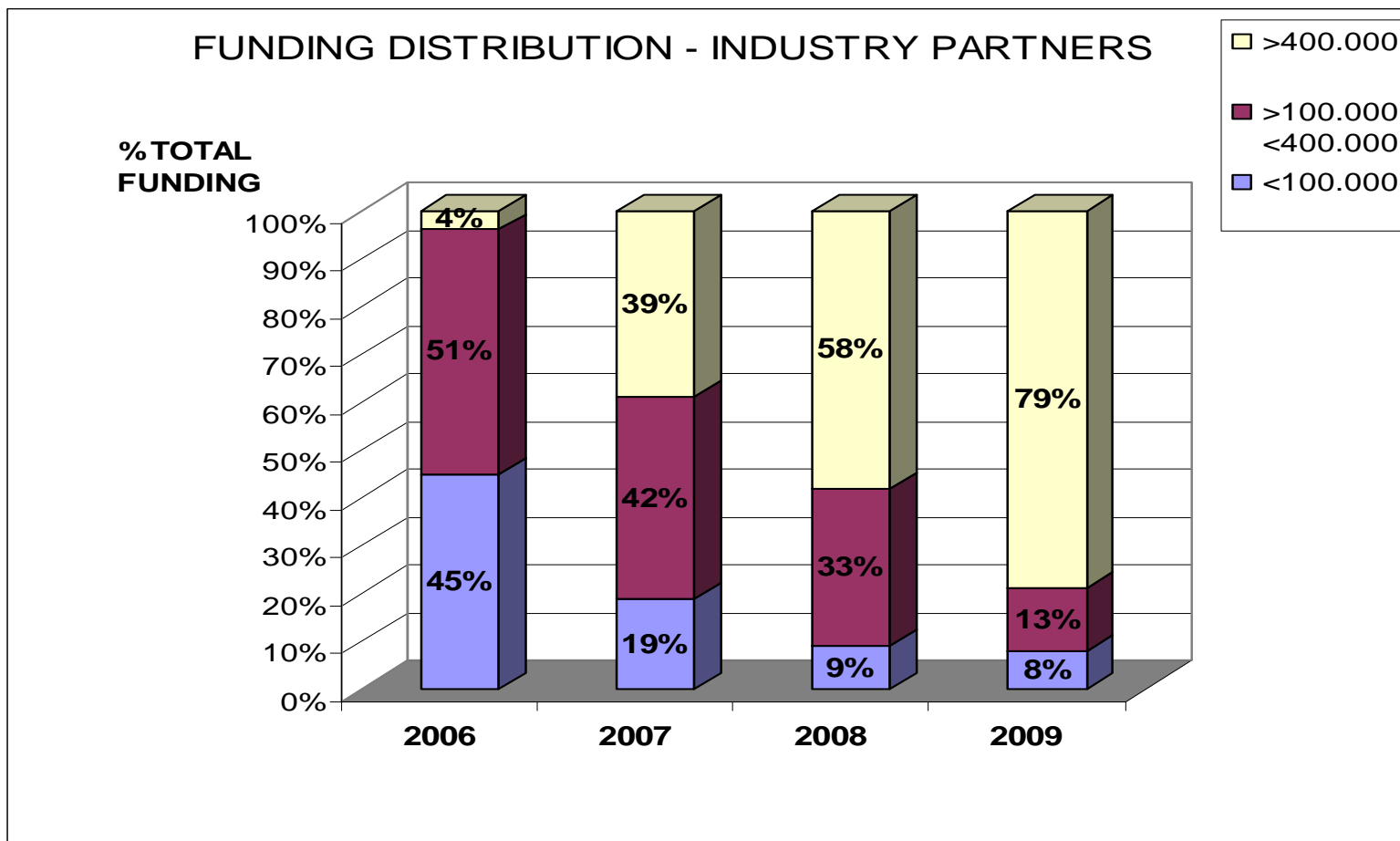
- Seventh Framework Programme ~ € 800 m / year
- European Energy Programme for Recovery ~ € 1600+115 m
- ETS – NER300 ~ € 4,5 bn

● Attract industrial interest

FUNDING DISTRIBUTION BY ORGANISATION TYPE



Leverage industrial investment





Thank you for your attention!

http://ec.europa.eu/energy/technology/set_plan/set_plan_en.htm



EUROPEAN
COMMISSION